

MO MO KO

DEFY NATURE.

/ TECHNICAL GUIDE 2014 /



CONTENTS /

THE 123 OF MOMOKO HAIR SHAPING	04
MOMOKO HAIR SHAPING - BASIC STEPS	05
ASSESSING THE CONDITION OF HAIR PRIOR TO TREATMENT	06
MOMOKO PRE-TREATMENTS	07
MOMOKO PRE-TREATMENTS - PRODUCT KNOWLEDGE	08
MOMOKO SOFTENING SOLUTIONS	10
PRE-WINDING/IRONING TREATMENTS - PRODUCT KNOWLEDGE	11
MOMOKO DIGITAL CURL - DETAILED APPLICATION MATRIX	12
MOMOKO DIGITAL CURL - STEP BY STEP	14
MOMOKO STRAIGHTENING - DETAILED APPLICATION MATRIX	16
AFTERCARE, ADVICE & CAUTIONS	18
MOMOKO SOFTENING SOLUTIONS & NEUTRALISERS - PRODUCT INFORMATION	20
APPENDIX	
MOMOKO DIGITAL CURL - SUMMARY APPLICATION MATRIX	22
MOMOKO STRAIGHTENING - SUMMARY APPLICATION MATRIX	23



WITH YOUR MOMOKO KIT AND THESE THREE CORE STAGES YOU CAN CREATE AN INFINITE NUMBER OF SHAPES.

The Hair Shaping Treatment Process to curl, straighten or create any texture inbetween follows these same core stages. The patented Momoko Solutions used to recondition and reshape the hair are versatile and the Application Matrices are easy to follow.

1 / SOFTENING (REDUCTION)

We understand hair shaping by looking at hair structure. Hair is principally made of keratin amino acids, among other proteins. These are arranged in polypeptide chains. Holding these chains together are strong water-resistant bonds between sulphur atoms. These disulphide bonds provide the hair with its strength, elasticity and, most importantly, it's permanent shape.

The hair's permanent shape can only be altered by releasing these bonds with the application of a chemical reducing agent. The Momoko Softening Solutions perform this function. These work at room temperature to release some, not all, of the bonds. The result is 'softened' hair, which is malleable and ready to be shaped.

2 / SHAPING

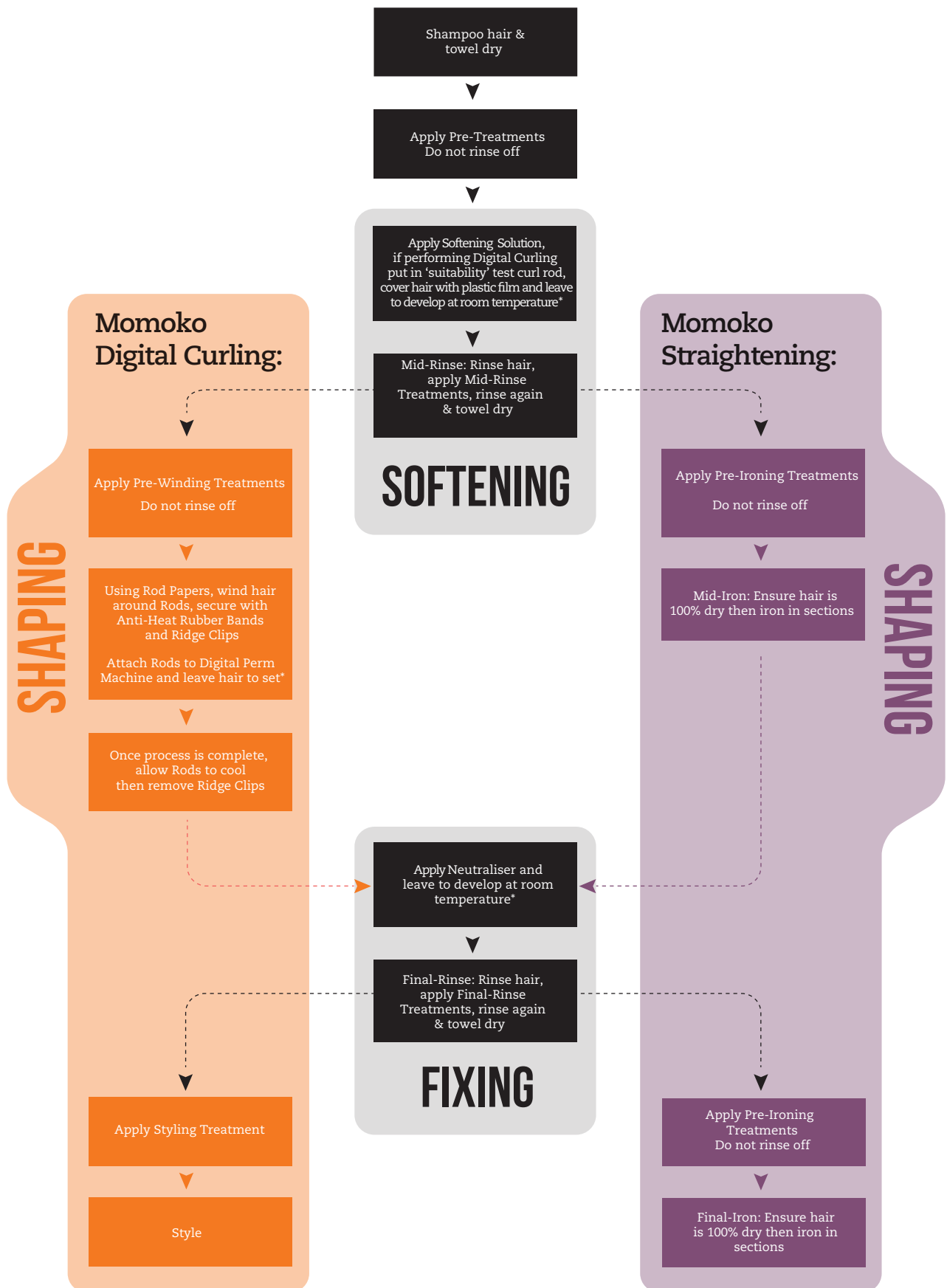
We use thermal heat (which influences the hair at a molecular level) to rearrange the released protein molecules into the correct configuration and achieve the desired overall shape. Hair is either wound around heated curling rods connected to the Digital Perm Machine (we call this Winding) or straightened using heated irons (we call this Ironing).

As expected, the diameter of the rods determines the degree of the curl, so that rods with a large diameter create a larger curl, while winding the hair around a rod with a small diameter makes tight curls. The stylist is able to creatively combine these rod sizes as required.

3 / FIXING

We apply the Momoko acidic neutraliser to reconnect the bonds and fix the shape of the hair. This will permanently reform approximately 80-90% of the disulphide bonds and other water-stable molecular links between the newly aligned protein molecules within the hair strand. These bonds are as strong as before the treatment process and unaffected by water so hair will not revert to its old shape when washed.

HAIR SHAPING - BASIC STEPS



BEFORE THE HAIR SHAPING TREATMENT PROCESS THE HAIR NEEDS TO BE ASSESSED.

PLEASE SEE PAGE 19 FOR PRECAUTIONS

Performing the initial hair assessment

Three fundamental first tests

Before the Hair Shaping Treatment Process the hair needs to be assessed. There are three tests: visual assessment, hair elasticity strand test and 'suitability' test curling. Performing these will tell you if the hair is suitable for the process, which Momoko Solutions and Pre-Treatments you'll need to use, and what results the client can expect.

Visual assessment

Assess the condition of the hair using your knowledge and experience. Hair which has been colour treated is likely to be damaged and will require application of Momoko Pre-Treatments. Long hair often varies in porosity along its length, so you might need to use a combination of Softening Solutions. Bleached hair will require a particular Softening Solution.

NOTE: The hair's texture, porosity and general condition may vary from root to tip, showing the signs of the client's own lifestyle, hair-care regime, thermal styling and previous chemical treatments (particularly bleach). The ends are generally the most damaged part of the hair. Towards the roots the hair is newer and generally more resistant.

Hair elasticity strand test

Take a strand of hair and pull to test its elasticity. There are four possible outcomes of this test:

1. Healthy hair will stretch to around 30% of its original length, and should spring back like a rubber band showing no signs of damage. This indicates a good balance of moisture and protein. In this instance the hair is suitable for the Hair Shaping Treatment Process.

2 / 3. Hair that stretches too much or does not spring back is showing a lack of protein (it is protein that gives hair its elasticity or "bounce back"). Hair that does not stretch is lacking in moisture. Either of these conditions can be rectified prior to the treatment process by applying the suitable Momoko Pre-Treatments. These are designed to instantly replenish the hair with its necessary proteins, ceramides and moisture. In this condition the hair is suitable for the Hair Shaping Treatment Process.

4. If the hair breaks when it's stretched it is considered far too damaged. The hair is not suitable for the Hair Shaping Treatment Process.

When performing Digital Curling in any cases of doubt or concern, or to be fully assured, you should conduct a 'suitability' test curl.

'Suitability' Test Curl

Apply the appropriate Softening Solution to a few strands of hair. Using Rod Papers, put in a test rod then cover with plastic film. Apply gentle heat for 20 minutes (you are advised to check regularly, at least after 10 minutes). This test gauges whether the hair's structure is strong enough to hold a curl.

Gauging the 'suitability' test curl processing time

If the diameter of the curl is greater than 1.5 times the diameter of the Rod used the hair requires additional processing time.

If the diameter of the curl is approximately 1.5 times the diameter of the Rod used the hair is fully processed.

Assessing the 'suitability' test curl

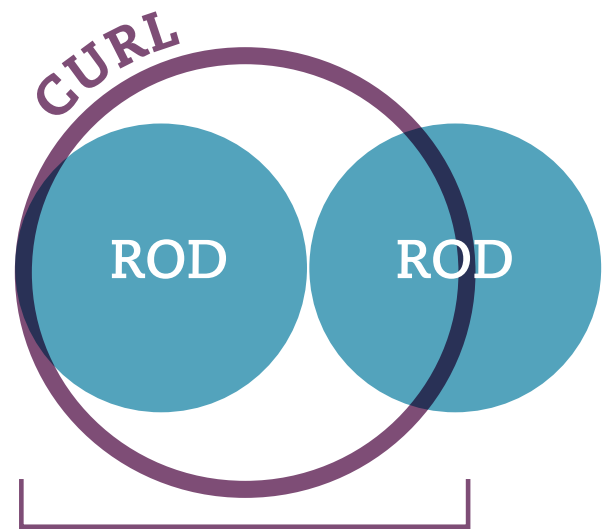
Once you have achieved a curl diameter of 1.5 times the diameter of the Rod used you can assess the processed curl. Using two fingers hold the test section at the root and slide down the section to remove the Softening Solution in one stroke. Gently pull the hair taught so that it straightens out. When you let go it should spring back to the curl shape of approximately 1.5 times the diameter of the test rod. You might need to tease it back to the curl shape and this is no cause for concern – as long as the curl then holds the shape by itself. If the section springs back (with or without encouragement) and holds the shape by itself the hair is suitable for Digital Curling.

If the section only partly springs back and will not hold the shape it does not mean the hair is unsuitable for Digital Curling. It does mean, however, that you may require a smaller Rod size (see example below), and you should be aware that certain curls and expectations might be unachievable.

If the section does not spring back at all this indicates that the hair structure is too weak and will not hold a curl. The Hair Shaping Treatment Process is not recommended for weakened hair and there is little to no shaping potential.

Example 'suitability' test curl scenario

If you are planning to use a Rod size of 23mm and the hair bounce back is good proceed with using a 23mm Rod. However, if the bounce back is partial use an 18mm Rod to achieve a final result as that of a 23mm Rod on strong hair. With little or no bounce back do not proceed with the Digital Curling service.



CURL = 1.5 x Diameter of Rod

Momoko Pre-Treatments

The results of the hair assessment will tell you which Momoko Solutions & Pre-Treatments to use in the Hair Shaping Treatment Process.

The Pre-Treatments in our range are able to instantly repair, recondition and prime even the most damaged hair (including bleached hair) from cuticle to cortex and only irreparably damaged hair is unable to undergo the Hair Shaping Treatment Process. They instantly restore protein and moisture levels so that hair is in optimum condition. This means that our Hair Shaping Treatment Process is the most unrestricted on the market.

Unevenly porous hair is common. Pre-Treatments will need to be applied with extra attention to porous areas.

The Momoko Pre-Treatment formula

Our advanced formula is a scientifically balanced combination of amino acids, key structural proteins including Keratin, Collagen and Silk, vitamins A, C, E and B12, marine and flower extracts, with Rice Bran Oil. An excellent emollient, Rice Bran Oil also adds extra ceramides, which are naturally occurring lipids found within the hair fibre. Their purpose is to act as a natural 'glue', binding the hair cuticle to the cortex and in doing so smoothing it down therefore helping to lock in and retain moisture and proteins whilst delivering a glossy finish to the hair. Combined, these ingredients serve to instantly repair and restore the condition of damaged hair inside and out by reinforcing the strength and structure of the hair shaft from cuticle to cortex whilst providing protection against future damage.

The science behind Momoko Pre-Treatments

Momoko Pre-Treatments work by penetrating the hair shaft to replenish depleted protein, ceramide and moisture levels, which repairs the internal structure and reinforces damaged cuticle layers to strengthen the hair. The advanced combination of ingredients completely eradicates the potential of damage during the Softening process by ensuring that the hair shaft only absorbs the appropriate level of chemicals. Hair will not over-process and results are consistent. During the thermal heat stage of the shaping process these conditioners are effectively locked deep into the hair fibre, leaving lasting permanent reconditioning results.

PRODUCT	FUNCTION	APPLICATION
<p>MOMOKO MIST</p>	<p>Repairs damaged hair. Balances moisture levels. Provides protection during the Hair Shaping Treatment Process.</p> <p>Contains Keratin, PI water, Hyaluronic acid, and flower & marine extracts.</p> <p>Key ingredients and their functions explained:</p> <ul style="list-style-type: none"> • Keratin – replenishes proteins in the hair shaft to repair and strengthen damaged hair. • Algae Extract – powerful and nourishing, containing a blend of various red algae, rich in amino acids, antioxidant vitamin C and vitamin B12. • Horse Chestnut & Chamomile Extracts – condition and protect. • PI water – an effective antioxidant with a small molecular structure, PI water penetrates and absorbs instantly into the hair shaft, delivering the essential vitamins, minerals and cellular oxygen necessary for cell development and growth. <p>PH level 5.4</p>	<p>Apply Momoko Mist prior to all other Momoko Pre-Treatments.</p> <p>After shampooing, towel dry hair, spray a generous amount of Momoko Mist throughout and comb through. Do not rinse.</p> <p>Follow up with other Momoko Pre-Treatments as necessary.</p>
<p>MOMOKO KE1</p>	<p>Moisturises, repairs and restores the condition of damaged hair. Prepares hair for application of Softening Solution. Increases rate of absorption of other key Pre-Treatment ingredients by gently swelling the hair shaft.</p> <p>Contains amino acids, vitamins A and E, and ceramide analogs.</p> <p>Key ingredients and their functions explained:</p> <ul style="list-style-type: none"> • Amino Acids – a blend of essential amino acids with high moisture retention properties to repair, rebuild and reinforce the hair structure, improving elasticity. Strongly attracted to weak or fragile hair and able to penetrate the hair shaft where they form an Amino Acid Complex (a quasi protein). • Ceramide Analogs – reinforce the cuticle's natural protective lipid barrier. Restore structure to damaged hair and protect against future damage. They mimic the function of natural ceramides. • Vitamins A and E – condition and moisturise. Hair's suppleness, sheen and body is visibly enhanced. <p>PH level 3.6</p>	<p>Apply Momoko KE1 directly on top of Momoko Mist. Concentrate on any damaged or porous areas requiring extra protection. Comb through. Do not rinse.</p>
<p>MOMOKO CS2</p>	<p>Instantly repairs and fortifies all internal and external components of the hair.</p> <p>Contains a blend of essential amino acids and key structural proteins Keratin, Collagen and Silk, specifically formulated for optimal absorption into the hair shaft.</p> <p>Key ingredients and their functions explained:</p> <ul style="list-style-type: none"> • Amino Acids – repairing and rebuilding damaged hair further. They penetrate the hair shaft and combine with the Amino Complex delivered by the Momoko KE1 Treatment and increase the overall molecular mass of the amino acids present. • Keratin, Collagen and Silk Proteins – key structural proteins to further stabilise the Amino Acid Complex. Protect the hair from damage by forming a strong protein barrier and regulate the absorption of chemicals during the Softening stage. <p>PH level 7.5</p>	<p>Only apply on top of Momoko Mist and Momoko KE1.</p> <p>Concentrate on areas requiring extra protection. Comb through. Do not rinse.</p>

PRODUCT	FUNCTION	APPLICATION
<p>MOMOKO CMC3</p>	<p>Restores the condition of damaged hair further.</p> <p>Contains a blend of moisturising and conditioning ingredients including Rice Bran Oil, vitamin E and Silk Proteins.</p> <p>Key ingredients and their functions explained:</p> <ul style="list-style-type: none"> • Rice Bran Oil – replenishes depleted ceramide levels. Rebuilds, strengthens and smoothes damaged hair for visibly shiny, healthy results. Reduces porosity to lock in proteins and moisture. Protects against damage during the Softening stage by regulating the absorption of chemicals. • Silk Proteins – moisturise, repair, strengthen, protect and improve elasticity, adding visible shine. • Vitamin E – restores hair back to health and revives shine by nourishing, conditioning and moisturising. Contains antioxidants. <p>PH level 6.2</p>	<p>Can be applied of top of any Momoko Pre-Treatments. Use on hair needing additional care such as split ends or heat-damaged areas.</p> <p>Apply a small amount to every required area. Do not rinse.</p> <p>If using as a Mid-Rinse or Final Rinse Treatment (during the mid-rinse and final-rinse stages) apply from roots to ends, massage through and rinse.</p>
<p>MOMOKO APT MICRO</p>	<p>Promotes penetration of the least powerful Softening Solutions. Repairs, protects and delivers moisture.</p> <p>Contains Hydrolyzed Collagen and Keratin proteins of a small molecular structure to promote penetration.</p> <p>Key ingredients and their functions explained:</p> <ul style="list-style-type: none"> • Keratin and Collagen Proteins – penetrate the hair shaft to repair and fortify the hair fibre, specifically formulated for optimum absorption. <p>PH level 5.8</p>	<p>Apply on top of Momoko Mist.</p> <p>Comb through.</p> <p>Do not rinse.</p>

Pre-Treatments should not be rinsed off and there is no waiting time for them to take effect. As soon as the application is completed the Softening Solution can be applied.

CHOOSE A SOFTENING SOLUTION BASED ON THE TYPE AND CONDITION OF A CLIENT'S HAIR

The Momoko Softening Solutions are specially formulated to treat very resistant to fragile bleached hair. In order to cater for a wide range of hair types they are available in various strengths with varying alkali levels, combined with an expansive range of reducing agents from Thioglycolic acid to Spiera®*. They are also conditioning and repairing thanks to a blend of proteins and other powerful nourishing, hydration boosting and hair fortifying ingredients.

You have complete flexibility and control over the process with Momoko – from the combination of Momoko Solutions you use to the processing time.

* Spiera® is a registered trademark of SHOWA DENKO

SOFTENING TAKES PLACE BEFORE SHAPING

Unlike a traditional perm hair is fully softened prior to being wound around the curling rods, thanks to the innovative techniques of Momoko Digital Curling.

You can easily ensure all of the hair is fully processed prior to shaping, which grants you complete control over the Softening process. You can use as many variants of the Softening Solution in different sections as needed throughout the hair, and vary the processing time of these sections. Whether straightening or curling, this approach gives you greater flexibility and control, and ultimately gives complete protection for the hair.

With experience you can also mix the solutions to better suit the condition of certain hair.

Both alkali and non-alkali complexes

Alkali

Alkali swells the hair shaft to enable the entry of chemicals into the hair fibre and cortex. Maximum strength alkalis are required on the strongest and most resistant hair, such as roots in virgin condition. Weak strength alkalis are gentler and suited to brittle ends.

Throughout the length of the hair the condition and porosity often varies. It is possible to adjust what happens to the hair and protect it, firstly with the Momoko Pre-Treatments and secondly by applying Softening Solutions with the appropriate strength, reducing agents and levels of alkali. You will never have to use a stronger Softening Solution than necessary. The system is so designed to eliminate the potential for over processing and the 'frizz' associated with other perming processes a thing of the past.

The optimum course of action, however, is to use a combination of Softening Solutions on different areas of the hair, and this approach comes with experience.

Non-alkali

Our revolutionary non-alkali solution with Spiera® is required on very porous hair, particularly bleached hair. The annular two dimensional structure of the molecules of this special reducing agent means it can easily enter the hair without the need for alkali, allowing sufficient softening without the necessity to swell the hair shaft.

MOMOKO

/ PRE-WINDING & PRE-IRONING TREATMENTS / PRODUCT KNOWLEDGE

THESE TREATMENTS ENSURE OPTIMUM RESULTS THROUGH PROVIDING EXTRA NOURISHMENT AND PROTECTION DURING THE HAIR SHAPING PROCESS.

PRODUCT	FUNCTION	APPLICATION
MOMOKO REPAIR MILK	<p>Targets damaged areas and replaces lost moisture to restore the condition of the hair. Protects against heat damage.</p> <p>Contains powerful organic ingredients combined with key components.</p> <p>Key ingredients and their functions explained:</p> <ul style="list-style-type: none">• Elderflower Extract, Cupuacu Butter and Avocado Oil – a mixture that instantly boosts the hair’s own natural recovery of moisture, resulting in greater elasticity and deep, long lasting hydration.• Ceramides, 18-MEA and Polyquaternium-51 – replenishes the lipid layer of the cuticle to reinforce the external structure. Locks in and retains moisture by providing a protective surface coating. Results in shinier, healthier looking and more manageable hair with reduced porosity and brittleness.• Arginine – repairs and fortifies the hair fibre from within. A natural amino acid and an essential element present within the hair fibre.• Fullerenes – deliver powerful antioxidant benefits.	<p>When using as a Pre-Winding Treatment (Momoko Digital Curl) - Apply a moderate amount to towel dried hair. Distribute evenly from roots to ends. Follow up with Momoko Shine Oil then proceed with the winding stage.</p> <p>When using as a Pre-Ironing Treatment (Momoko Straightening) - Apply a moderate amount to towel dried hair. Distribute evenly from roots to ends. Follow up with Momoko Shine Oil then proceed with the ironing stage.</p>
MOMOKO SHINE OIL	<p>Instantly nourishes, boosts moisture levels and provides intense shine and hydration for dry, damaged hair.</p> <p>A light, non-greasy formula enriched with a blend of luxurious organic oils including Argan Oil, Andiroba Oil and Cupuacu Butter.</p> <p>Key ingredients and their functions explained:</p> <ul style="list-style-type: none">• Argan Oil, Andiroba Oil and Cupuacu Butter – instantly nourish, repair, boost moisture levels and provide intense shine and hydration.• Ceramides and 18-MEA – replenishes the lipid layer of the cuticle to reinforce the external structure. Locks in and retains moisture by providing a protective surface coating. Results in shinier, healthier looking and more manageable hair with reduced porosity and brittleness.• Vitamin E – nourishes, conditions and moisturises the hair, restoring it back to health and reviving lost shine. Delivers powerful antioxidant benefits.• Fullerenes – deliver powerful antioxidant benefits.	<p>To use as a Pre-Winding Treatment (Momoko Digital Curl) - After applying Momoko Repair Milk, apply a moderate amount of Momoko Shine Oil from mid to end sections of the hair then proceed with the winding stage.</p> <p>To use as a Pre-Ironing Treatment (Momoko Straightening) - After applying Momoko Repair Milk, apply a moderate amount of Momoko Shine Oil from mid to end sections of the hair, rough dry hair 100% then proceed with the ironing stage.</p>

Pre-Winding/Ironing Treatments should not be rinsed off and there is no waiting time for them to take effect.

Hair type	Normal or Coloured and Resistant Hair in Good Condition		Normal or Coloured Hair in Dry or Damaged Condition		Very Dry and Damaged Hair		Hair with high percentage of bleach
	Curl D100	Dual C90	Curl D70	Dual C70	Curl D40	Dual C40	
Softening Solution	Curl D100	Dual C90	Curl D70	Dual C70	Curl D40	Dual C40	Dual P30/P30+
Expected result	1.5 x rod size		2x rod size		2x rod size		3x rod size
Shampoo	Clarifying Shampoo		Clarifying Shampoo		Repairing Shampoo		Repairing Shampoo

- Shampoo hair, rinse thoroughly with lukewarm water and towel dry

Pre-Treatments	Mist KE1 CS2	Mist KE1 CS2 CMC3	Mist APT Micro	Mist APT Micro
-----------------------	-----------------	-------------------------	----------------	----------------

- Mist – spray hair and comb through
- KE1 – apply on top of Mist, section by section, concentrating on damaged areas and comb through
- CS2 – apply on top of KE1 and comb through
- CMC3 - apply to hair ends if required
- APT Micro – apply on top of Mist and comb through
- Do not rinse off the Pre-Treatments

Softening Solution	Curl D100	Dual C90	Curl D70	Dual C70	Curl D40	Dual C40	Dual P30/P30+
Softening Time (mins)	10-30		10-25		5-20		5-20
Amount Required	Between 80g-100g depending on hair length		Between 80g-100g depending on hair length		Between 80g-100g depending on hair length		Mix 1 part Dual P30+ with 7 parts Dual P30 Eg 10g+70g=80g for medium length hair

- Apply Softening Solution, section by section along the lengths of the hair, ensuring an even distribution
- Start with more resistant areas first and apply at least 1 inch from the scalp
- Put in 'softening' test curl rods – with no tension or overlap
- Cover hair with plastic film and leave to develop at room temperature – follow guide times above
- Reapply after 30 minutes if necessary
- Check whether the 'softening' test curl is yet holding at 1.5x diameter of the Rod used or perform a hair strand elasticity test at regular intervals

Mid-Rinse Treatments	Deo Rinse CMC3	Deo Rinse CMC3	Deo Rinse CMC3	Deo Rinse CMC3
-----------------------------	----------------	----------------	----------------	----------------

- Rinse off Softening Solution with lukewarm water
- Apply Deo Rinse (undiluted), massage through hair then rinse off with lukewarm water
- Apply CMC3, massage through hair from roots to ends then rinse off with lukewarm water and towel dry

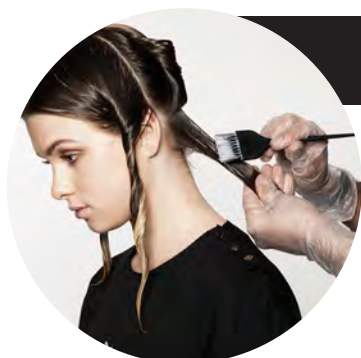
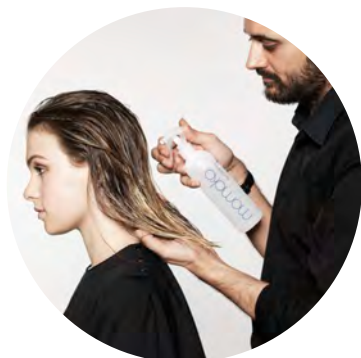
Hair type	Normal or Coloured and Resistant Hair in Good Condition		Normal or Coloured Hair in Dry or Damaged Condition		Very Dry and Damaged Hair		Hair with high percentage of bleach
Pre-Winding Treatments	Repair Milk Shine Oil		Repair Milk Shine Oil		Repair Milk Shine Oil		Repair Milk Shine Oil
<ul style="list-style-type: none"> Apply Repair Milk from roots to ends (Do not rinse off) Apply Shine Oil from mid to end sections of the hair (Do not rinse off) Spray two sheets of Rod Paper with Mist to facilitate the steam process and use to wind the hair onto the Rods, taking a uniform amount of hair for each Rod On completion of the Winding process, secure Rods with Anti-Heat Rubber Bands and Ridge Clips Place Rod Under Pads under each Rod to protect the scalp from the heat Attach the Rod Lines and select appropriate setting on the Digital Perm Machine 							
Setting Time	Until 80 – 100% dry 15 min Dry setting Additional minutes with dry setting (checking every 10 minutes)		Until 80 – 100% dry 15 min Dry setting Additional minutes with dry setting (checking every 10 minutes)		Until 80 – 100% dry 15 min Dry setting Additional minutes with dry setting (checking every 10 minutes)		Until 80 – 100% dry 15 min Dry setting Additional minutes with dry setting (checking every 10 minutes)
<ul style="list-style-type: none"> Process is complete when hair is 80 -100% dry Allow Rods to cool before removing the Rod Lines (approx. 5 minutes) Remove Ridge Clips 							
Neutraliser	Curl D2	Curl C2	Curl D2	Curl C2	Curl D2	Curl C2	Curl P2
Fixing Time (mins)	10 (5+5)	15 (5+10)	10 (5+5)	15 (5+10)	10 (5+5)	15 (5+10)	15 (5+10)
<ul style="list-style-type: none"> Apply Neutraliser then reapply, following guide times above – ensure hair is saturated Allow solution to develop at room temperature Once process is complete, rinse off Neutraliser with lukewarm water 							
Final-Rinse Treatments	Deo Rinse CMC3		Deo Rinse CMC3		Deo Rinse CMC3		Deo Rinse CMC3
<ul style="list-style-type: none"> Apply Deo Rinse (undiluted), massage through hair and leave for 3-5 minutes, then rinse Apply CMC3, massage through hair, rinse then towel dry 							
Styling	Repair Milk		Repair Milk		Repair Milk		Repair Milk
<ul style="list-style-type: none"> Comb through with a wide tooth comb, apply Repair Milk and Style 							



PREPARATION

Assess hair condition following the three tests.

- **Shampoo hair** with the appropriate Momoko Shampoo depending on hair type/condition. (Select from the application matrix).
- **Rinse hair** thoroughly and towel dry.
- **Apply** the appropriate Momoko Pre-Treatments depending on hair type. (Select from the application matrix). **Do not rinse off.**



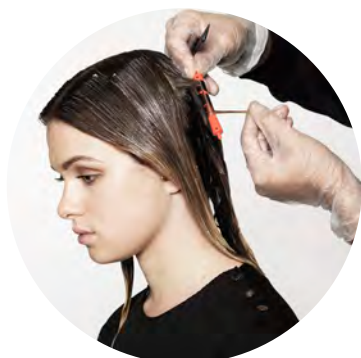
SOFTENING

- **Apply the appropriate Momoko Softening Solution** in small sections, ensuring even distribution (select from application matrix). Start with more resistant areas first and apply at least 1 inch from the scalp.

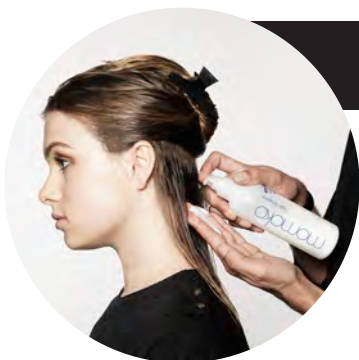
Put in a 'softening' test curl rod.

Cover hair with plastic film and leave to develop at room temperature – see timings on application matrix. Check whether the 'softening' test curl is yet holding at 1.5x diameter of the Rod used or perform a hair strand elasticity test at regular intervals to avoid over processing.

- **Mid-Rinse.** Rinse hair and apply Mid-Rinse Treatments. Apply Momoko Deo Rinse, massage through hair and rinse. Apply Momoko CMC3, massage through hair, rinse and towel dry.



SHAPING



- **Apply Momoko Pre-Winding Treatments – Apply Momoko Repair Milk** from roots to ends.
Do not rinse off.
Apply Momoko Shine Oil from mid to end sections of the hair.
Do not rinse off.

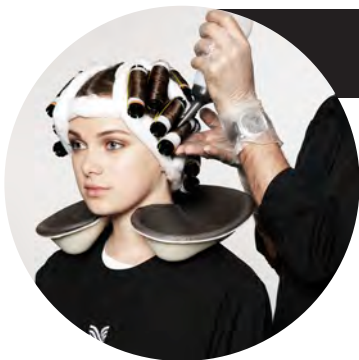


- **Spray Rod Papers** with Momoko Mist and wind hair onto Rods.



- **Secure Rods with Anti-Heat Rubber Bands and Ridge Clips.** Attach Rods to the Digital Perm Machine using the Rod Lines (for times and settings see application matrix).
- **When complete allow Rods to cool before removing the Ridge Clips.**

FIXING



- **Apply the appropriate Momoko Neutraliser** (see application matrix). Leave to develop at room temperature (for timings see application matrix).
- **Final Rinse**
Rinse hair and apply Final-Rinse Treatments. Apply Momoko Deo Rinse (undiluted) and massage through hair. Leave for 3-5 minutes then rinse. Apply Momoko CMC3 and massage through hair. Rinse and towel dry.

FINAL STEPS & RESULT



- **Comb through with a wide-tooth comb.**
Apply Momoko Repair Milk and style.

Hair type	Normal or Coloured and Resistant Hair in Good Condition		Normal or Coloured Hair in Dry or Damaged Condition		Very Dry and Damaged Hair		Hair with high percentage of bleach
	Straight S120	Dual C90	Straight S100	Dual C70	Straight S40	Dual C40	
Softening Solution	Straight S120	Dual C90	Straight S100	Dual C70	Straight S40	Dual C40	Dual P30/P30+
Expected result	Poker Straight	Natural Straight	Poker Straight	Natural Straight	Very Straight	Natural Straight	Natural Straight
Shampoo	Clarifying Shampoo		Clarifying Shampoo		Repairing Shampoo		Repairing Shampoo
<ul style="list-style-type: none"> Shampoo hair, rinse thoroughly with lukewarm water and towel dry 							
Pre-Treatments	Mist KE1 CS2		Mist KE1 CS2 CMC3		Mist APT Micro		Mist APT Micro
<ul style="list-style-type: none"> Mist – spray hair and comb through KE1 – apply on top of Mist, section by section concentrating on damaged areas and comb through CS2 – apply on top of KE1 and comb through CMC3 - apply to hair ends if required APT Micro – apply on top of Mist and comb through Do not rinse off the Pre-Treatments 							
Softening Solution	Straight S120	Dual C90	Straight S100	Dual C70	Straight S40	Dual C40	Dual P30/P30+
Softening Time (mins)	10-30		10-30		5-30 (check regularly)		5-30 (check regularly)
Amount Required	Between 80g – 100g depending on hair length		Between 80g-100g depending on hair length		Between 80g-100g depending on hair length		Mix 1 part Dual P30+ with 7 parts Dual P30 E.g. 10g + 70g = 80g for medium length hair
<ul style="list-style-type: none"> Apply Softening Solution, section by section along the lengths of the hair, ensuring an even distribution. Start with more resistant areas first and apply at least 1 inch from the scalp Put in ‘softening’ test curl rods – with no tension or overlap Cover hair with plastic film and leave to develop at room temperature – follow guide times above. Reapply after 30 minutes if necessary Check whether the ‘softening’ test curl is yet holding at 1.5x diameter of the Rod used or perform a hair strand elasticity test at regular intervals 							
Mid-Rinse Treatments	Deo Rinse CMC3		Deo Rinse CMC3		Deo Rinse CMC3		Deo Rinse CMC3
<ul style="list-style-type: none"> Rinse off Softening Solution with lukewarm water Apply Deo Rinse (undiluted), massage through hair then rinse off with lukewarm water Apply CMC3, massage through hair from roots to ends then rinse off with lukewarm water and towel dry 							

Hair type	Normal or Coloured and resistant Hair in Good Condition		Normal or Coloured Hair in Dry or Damaged Condition		Very Dry and Damaged Hair		Hair with high percentage of bleach
Pre-Ironing Treatments	Repair Milk Shine Oil		Repair Milk Shine Oil		Repair Milk Shine Oil		Repair Milk Shine Oil
<ul style="list-style-type: none"> Apply Repair Milk from roots to ends (Do not rinse off) Apply Shine Oil from mid to end sections of the hair (Do not rinse off) Completely dry hair (100%) 							
Irons Temperature	Iron = 200°C Passes = 2 slow passes or 3 for more resistant hair.		Iron = 180°C Passes = 2 slow passes or 3 for more resistant hair.		Iron = Between 160°C and 180°C (depending on the condition) Passes = 2 slow passes or 3 for more resistant hair.		Iron = Between 160°C and 180°C (depending on the condition) Passes = 2 slow passes or 3 for more resistant hair.
<ul style="list-style-type: none"> Mid-Iron: Iron hair in sections, making sure to hold iron vertically applying a light tension to the root and scalp when sliding the iron through the hair 							
Neutraliser	Straight S2	Straight C2	Straight S2	Straight C2	Straight S2	Straight C2	Straight P2
Fixing time (mins)	10	15	10	15	10	15	15
<ul style="list-style-type: none"> Apply Momoko Neutraliser, following guide times above and allow solution to develop at room temperature Once process is complete, rinse off Neutraliser with lukewarm water 							
Final-Rinse Treatments	Deo Rinse CMC3		Deo Rinse CMC3		Deo Rinse CMC3		Deo Rinse CMC3
<ul style="list-style-type: none"> Apply Deo Rinse (undiluted), massage through hair and leave for 3-5 minutes, then rinse Apply CMC3, massage through hair, rinse then towel dry 							
Pre-Ironing Treatments	Repair Milk Shine Oil		Repair Milk Shine Oil		Repair Milk Shine Oil		Repair Milk Shine Oil
<ul style="list-style-type: none"> Apply Repair Milk from roots to ends (Do not rinse off) Apply Shine Oil from mid to end sections of the hair (Do not rinse off) Completely dry hair (100%) Final-Iron: Iron hair in sections, making sure to hold iron vertically applying a light tension to the root and scalp when sliding the iron through the hair 							

The hair is particularly vulnerable immediately after any thermal hair conditioning treatments.

Advise all clients to observe the following home care prescription for 48 hours to ensure the very best results from the treatment.

1. No shampooing.
2. No exercising, swimming or excess sweating.
3. No putting hair up in a pony-tail.
4. No putting any clips or rubber bands in hair.
5. No putting hair behind ears.

After the 48 hour period the hair can be washed as normal.

PRE-Cautions:

During Softening:

As the Momoko Softening Solutions have a faster processing time, a frequent strand elasticity test is necessary during the Softening stage in order to avoid over-processing of the hair. The elasticity test will ascertain if the bonds have been sufficiently broken and that the hair is ready for the next stage.

The Softening Solution should be removed once the hair reaches its optimal elastic state i.e. stretches 60% and returns indicating that the structural bonds have been broken and that there is no sign of damage. It is also important to note that when the Softening Solution is on the hair, it is breaking bonds and the hair is in a softened state. Excessive manipulation of the “softened” hair can cause breakage so caution should be exercised.

Excessive manipulation of hair during Softening and before Fixing can cause breakage so caution should be exercised.

Hair breakage

Hair breakage during and after the procedure can be a result of the following:

- Too much tension applied to the hair as it is curled around the Rods.
- Over-processing during the softening stage results in too many cystine bonds being released. These released bonds weaken the hair and make it susceptible to breaking.
- Excessive manipulation of the “swelled” hair can cause breakage so caution should be exercised.
- Over-neutralising with hydrogen peroxide results in cystine changing to cysteic acid which does not form linkages.

To avoid major problems it is now imperative for clients to know which chemical ingredient was used on their hair. Sodium hydroxide and Guanidine calcium hydroxide relaxers are interchangeable. However, Thioglycolate and Cysteamine are not compatible/interchangeable (not compatible with previous lye-based hair relaxing treatments) with Sodium hydroxide and Guanidine calcium hydroxide relaxers.

MOMOKO

MOMOKO SOFTENING SOLUTIONS / PRODUCT INFORMATION

Softening Solutions	Application	Reducing Agent	Power*	pH	Texture**	Alkali	Reducing Agent (TC)	(PH & Reduction when mixed)
Curl D100	Momoko Digital Curl	Thioglycolic Acid	100	9	8	5.50%	10.80%	
Curl D70	Momoko Digital Curl	Thioglycolic Acid	70	9.3	8	4.85%	4.85%	
Curl D40	Momoko Digital Curl	Thioglycolic Acid	40	6.8	8	0.32%	4.85%	
Straight S120	Momoko Straightening	Thioglycolic Acid	120	9.3	6	6.80%	10.80%	
Straight S100	Momoko Straightening	Thioglycolic Acid	100	9.1	6	5.50%	10.75%	
Straight S40	Momoko Straightening	Thioglycolic Acid	40	6.5	6	0.30%	6%	
Dual C90	Momoko Digital Curl & Momoko Straightening	Cysteamine, Thioglycolic Acid, Thioglycerol, Sulphite	90	8.9	10	5.40%	5.35%	
Dual C70	Momoko Digital Curl & Momoko Straightening	Cysteamine, Thioglycolic Acid	70	8.2	10	1.50%	4.20%	
Dual C40	Momoko Digital Curl & Momoko Straightening	Cysteamine, Cysteine	40	7.9	10	0.80%	2%	
Dual P30/P30+	Momoko Digital Curl & Momoko Straightening	Spiera	30	3.6	10	0.00%	11.70%	2%(ratio of 1:7) Mixture in this ratio PH 5.4
		Cysteamine		7.0		0.00%	0.50%	

Power
30 - 120



STRONGER

* A power of 120 is the strongest.

Texture
6 - 10



SOFTER

** A texture of 10 is the softest.

MOMOKO

MOMOKO NEUTRALISERS / PRODUCT INFORMATION

Neutralisers	Application	Oxidizing Agent	Density	pH
Curl D2	Momoko Digital Curl	Hydrogen Peroxide	1.95%	3
Straight S2	Momoko Straightening	Hydrogen Peroxide	1.82%	2.9
Curl C2	Momoko Digital Curl	Sodium Bromate	8%	6.5
Straight C2	Momoko Straightening	Sodium Bromate	8%	6.5
Curl P2	Momoko Digital Curl	Sodium Bromate	10%	6.6
Straight P2	Momoko Straightening	Sodium Bromate	8%	6.6

Hair type	Normal or Coloured and Resistant Hair in Good Condition		Normal or Coloured Hair in Dry or Damaged Condition		Very Dry and Damaged Hair		Hair with high percentage of bleach
	Curl D100	Dual C90	Curl D70	Dual C70	Curl D40	Dual C40	
Softening Solution	Curl D100	Dual C90	Curl D70	Dual C70	Curl D40	Dual C40	Dual P30/P30+
Expected result	1.5 x rod size		2x rod size		2x rod size		3x rod size
Shampoo	Clarifying Shampoo		Clarifying Shampoo		Repairing Shampoo		Repairing Shampoo
Pre-Treatments	Mist KE1 CS2		Mist KE1 CS2 CMC3		Mist APT Micro		Mist APT Micro
Softening Time (mins)	10-30		10-25		5-20		5-20
Mid-Rinse & Final-Rinse Treatments	Deo Rinse CMC3		Deo Rinse CMC3		Deo Rinse CMC3		Deo Rinse CMC3
Pre-Winding Treatments	Repair Milk Shine Oil		Repair Milk Shine Oil		Repair Milk Shine Oil		Repair Milk Shine Oil
Setting Time	Until 80 – 100% dry 20 min low perm setting Additional minutes with dry setting (checking every 10 minutes)		Until 80 – 100% dry 20 min low perm setting Additional minutes with dry setting (checking every 10 minutes)		Until 80 – 100% dry 20 min low perm setting Additional minutes with dry setting (checking every 10 minutes)		Until 80 – 100% dry 20 min low perm setting Additional minutes with dry setting (checking every 10 minutes)
Neutraliser	Curl D2	Curl C2	Curl D2	Curl C2	Curl D2	Curl C2	Curl P2
Fixing Time (mins)	10 (5+5)	15 (5+10)	10 (5+5)	15 (5+10)	10 (5+5)	15 (5+10)	15 (5+10)

Hair type	Normal or Coloured and Resistant Hair in Good Condition		Normal or Coloured Hair in Dry or Damaged Condition		Very Dry and Damaged Hair		Hair with high percentage of bleach
	Straight S120	Dual C90	Straight S100	Dual C70	Straight S40	Dual C40	
Softening Solution	Straight S120	Dual C90	Straight S100	Dual C70	Straight S40	Dual C40	Dual P30/P30+
Expected result	Poker Straight	Natural Straight	Poker Straight	Natural Straight	Very Straight	Natural Straight	Natural Straight
Shampoo	Clarifying Shampoo		Clarifying Shampoo		Repairing Shampoo		Repairing Shampoo
Pre-Treatments	Mist KE1 CS2		Mist KE1 CS2 CMC3		Mist APT Micro		Mist APT Micro
Softening Time (mins)	10-30		10-30		5-30 (check regularly)		5-30 (check regularly)
Mid-Rinse & Final-Rinse Treatments	Deo Rinse CMC3		Deo Rinse CMC3		Deo Rinse CMC3		Deo Rinse CMC3
Pre-Ironing Treatments	Repair Milk Shine Oil		Repair Milk Shine Oil		Repair Milk Shine Oil		Repair Milk Shine Oil
Irons Temperature	Iron = 200°C Passes = 2 slow passes or 3 for more resistant hair.		Iron = 180°C Passes = 2 slow passes or 3 for more resistant hair.		Iron = Between 160°C and 180°C (depending on the condition) Passes = 2 slow passes or 3 for more resistant hair.		Iron = Between 160°C and 180°C (depending on the condition) Passes = 2 slow passes or 3 for more resistant hair.
Neutraliser	Straight S2	Straight C2	Straight S2	Straight C2	Straight S2	Straight C2	Straight P2
Fixing Time (mins)	10	15	10	15	10	15	15

MOMO MOMO KOKO

DEFY NATURE.

/ 50 JERMYN STREET, MAYFAIR, LONDON SW1Y 6LX, UK

/ TEL: +44 (0) 207 917 2861

/ WWW.MOMOKO.CO.UK